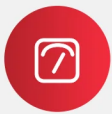


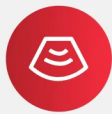
# Milk cooler 【SC10】

Intelligent and safe  
The best partner for coffee machines



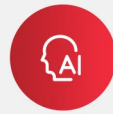
### Lack of milk warning

If there is a lack of milk, automatically remind



### Temperature measurement

Measuring the milk temperature and transmit data to the coffee machine



### Intelligent touch

Adjust the milk temperature through the screen



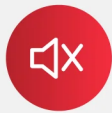
### Automatic recovery

Working like before power failure when power on again



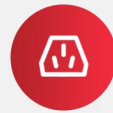
### Air-cooled and frost-free

Automatic defrost to ensure cooling efficiency



### Mute model

Low noise cooling



### Overvoltage protection

Protecting the parts from damage when the power voltage is too high



### Security lock

Equipped with door locks to ensure internal safety and clean

## Specifications

|                    |                     |   |
|--------------------|---------------------|---|
| Product name       | Model               | Weight                                    |
| Milk cooler        | SC10                | 14kg                                      |
| Voltage            | Frequency           | Power                                     |
| 220-240V           | 50Hz                | 65W                                       |
| Cooling method     | Adjustment method   | Temperature range                         |
| Compressor         | Tem.adjust by touch | 1-5°C                                     |
| Power cable length | Internal capacity   | Milk container capacity                   |
| 1.8m               | 10L                 | 6L  |
| Certification      | Inside size (W*D*H) | Outside size (W*D*H)                      |
| CE/CCC/CB          | 16.5*29.3*27.2cm    | 24*42*61cm (Tall)<br>24*42*52.7cm (Short) |

## Matching plan



F2+SC10(Tall)



F3+SC10(Tall)



Minibar+SC10(Short)



Coffeebar+SC10(Short)